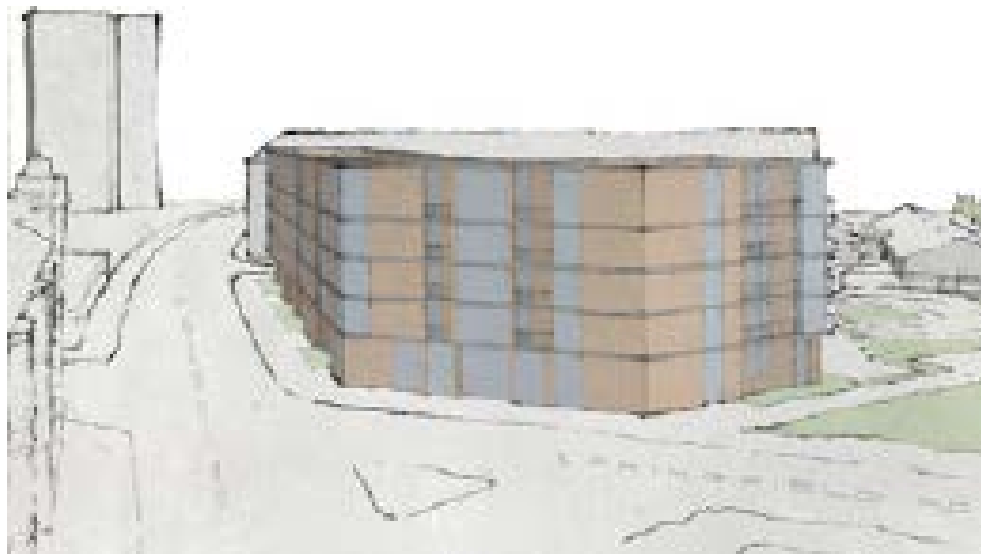
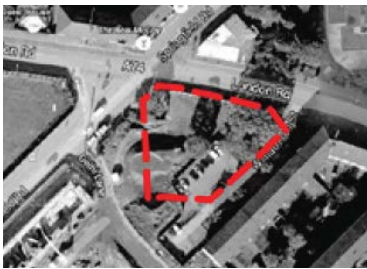


# Springfield Cross, Dalmarnock, Glasgow



## Client:

West of Scotland Housing Association

## Architect:

Robert Potter & Partners LLP

## Services Provided:

Civil & Structural Engineering Services

## Project Duration:

2017 - Ongoing

## Project Description:

The project involves the new build construction of a 6 storey residential flatted development including commercial units at ground floor, located at the junction of Williamson Street and Silverdale Street, Glasgow, together with associated hard and soft landscaping to the immediate surrounding area.

The housing mix comprises 36 number 1, 2 & 3 bed flats with car parking and private gardens to the rear of the properties.

PUNCH Consulting have been appointed to provide the following Civil and Structural Engineering services:

- Surface water assessment, including attenuation measures and new drainage.
- SUDS Drainage system in order to reduce the likelihood of flooding, reduce water pollution and replenish ground water supplies, utilising infiltration trenches to roads, car parks and drainage.
- External enabling works to allow development to proceed.
- Engineering of external car parking and paved areas.
- Piled ground beam foundation design and detailing.
- Composite steel framed design and detailing.
- Stair/lift cores reinforced concrete design and detailing.